

Kirklees Special Educational Needs and Disabilities Written Statement Of Action



September 2022


NHS West Yorkshire
Integrated Care Board

 **Kirklees**
COUNCIL

Kirklees SEND Written Statement of Action – September 2022

Introduction

Between the 7th and 11th February 2022, Ofsted and the Care Quality Commission (CQC), conducted a joint inspection of the Kirklees local area to judge the effectiveness of the area in implementing the special educational needs and/or disabilities (SEND) reforms as set out in the Children and Families Act 2014.

The published inspection report highlighted the requirement for a Written Statement of Action (WSOA) because of two significant areas of weakness in the local area's delivery of services in relation to special educational needs and disabilities. The local authority and the WY ICB (formerly Kirklees CCG) are jointly responsible for submitting the written statement of action to Ofsted to improve the identified areas of weakness. These areas of weakness are:

- The poor delivery of the HCP which does not support the identification of SEND in children at the earliest opportunity consistently.
- Weaknesses in the area's ability across services and within settings to identify and meet the needs of children and young people with SEND who are in mainstream settings.

This document and associated appendices outline how the specific requirements arising from the inspection are and will be addressed by our SEND Transformation Plan to ensure an integrated and holistic approach to SEND improvement in Kirklees. It will outline how the Transformation Plan and its supporting workstreams will have SMART outcomes to address the requirements of the WSOA.

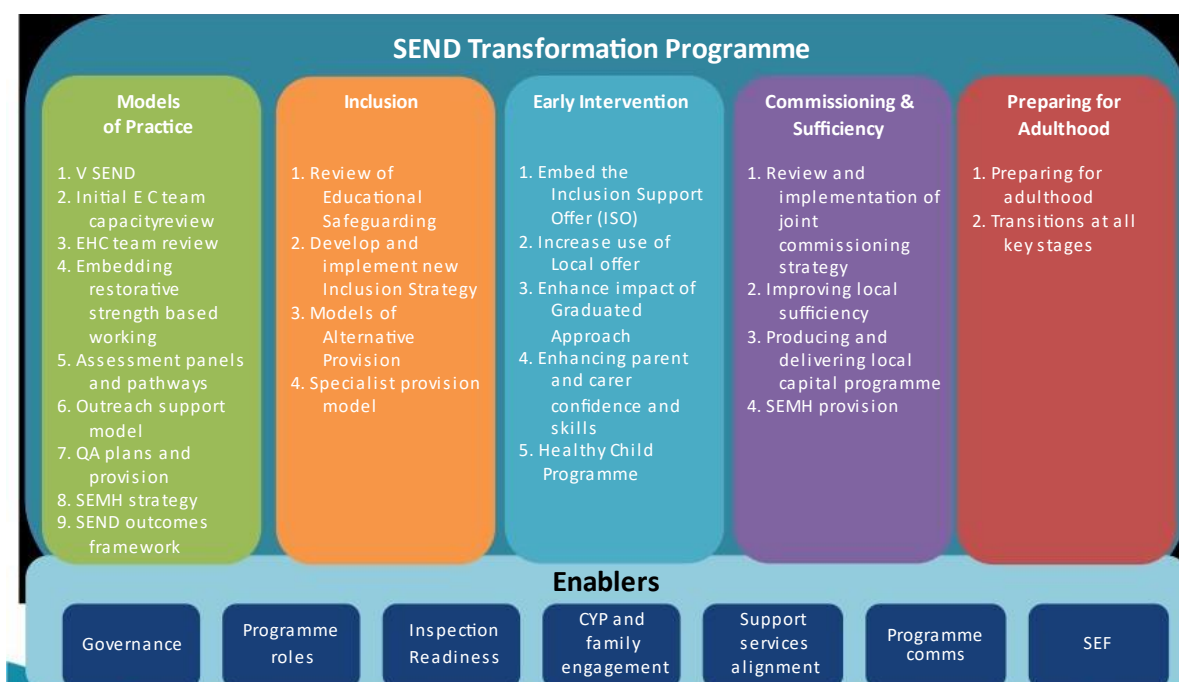
The Kirklees SEND Transformation Plan

Prior to the SEND inspection, the Kirklees partnership, in consultation with parent and carers, had already begun an improvement and development journey, as our own self-assessment had identified areas that require improvement and areas of good practice that needed to be further embedded. Our approach and priorities were captured in the Kirklees SEND Transformation Plan which was published in September 2021. This is reviewed on an annual basis in consultation across the partnership and with key stakeholders.

The SEND Transformation Plan, building upon previous improvement work, had been delivering significant progress across the SEND system before the inspection took place. These included the refreshed Local Offer and introduction of the Inclusion Support Offer. It was an integral part of the submission that secured a 'Safety Valve' agreement with the DfE and EFSA. The SEND Transformation Plan was agreed and signed off through the Kirklees Health and Wellbeing Board, and its operational delivery is overseen monthly through our SEND Transformation and Commissioning group which comprises commissioners and providers across education, health, social care, and the voluntary and community sector. The SEND Transformation Plan was produced following extensive consultation with parents, young people, partners, and other key stakeholders. Kirklees also commissioned IMPOWER,

a national leader in SEND improvement, to support this work in a consultancy capacity. The plan incorporated a set of 'Inclusive Ambitions' across the partnership (developed with key stakeholders) as well as identifying key workstream areas for SEND improvement. The main plan is underpinned by a series of detailed project plans with SMART objectives that are sequenced to ensure our ambitions and visions are delivered in a manageable, sustainable way, but with pace and focus.

Consultation and co-production are key to our approach to developing services. For example, attached as Appendix 3, is recent consultation undertaken with young people in Kirklees with SEND on their views on how our Alternative Provision can be developed. These have been incorporated into our SEND Transformation Programme.



The Safety Valve proposals and approach were agreed with the Department for Education ([Kirklees SV agreement \(publishing.service.gov.uk\)](https://publishing.service.gov.uk) in March 2022 reflecting very closely the themes identified in the 2022 Inspection. In Section 3 of the Formal Safety Valve agreement, for example, includes the follow commitments:

3.2 Implement joint commissioning and sufficiency strategies, re-balancing the range of placements, services and provision locally. These will include rebuilding and creating additional SEMH and Complex ASD special school places and increasing additionally resourced provision, to ensure a sufficient mix of flexible services and local placements for children and young people.

3.3. Support children with SEND in mainstream schools by continuing to develop and implement the graduated approach, outreach support model and inclusion strategies which further develop the skills, expertise and capacity of the workforce.

3.4. *Ensure that children and young people are being prepared for adulthood throughout their life course, promoting a focus on independence and transition as early as possible in a child’s and families journey.*

3.5. *Ensure that children, young people and families have the right help at the earliest possible opportunity at a time that is right for them. This will mean having their needs met at the most appropriate level of provision without the need escalate into formal processes in order to have that need met. This will build on approaches being implemented including outcome-based tools such as VSEND ensuring need is understood holistically and can be met at school and at home; and our inclusion support offer (ISO) providing advice and support for professionals and families.*

The workstreams and associated detailed project plans that are central to our Transformation Programme directly address the second priority area of the Inspection report. This is a very broadly stated action, and this document summarises what it means for Kirklees in the table below. By further incorporating and developing the actions in relation to the Healthy Child Programme improvements, the transformation work programmes are already addressing the areas for improvement identified in the inspection.

As a local partnership, Kirklees views the inspection report and outcomes as part of our transformation journey, largely confirming our own analysis. Therefore, we are fully committed to addressing and improving the specific areas identified within the inspection report as part of our broader transformation plans.

Kirklees is taking a holistic approach to SEND improvement. Our Kirklees Futures, the district’s learning strategy, for example, has significant commitments and focus on inclusion and improving educational outcomes, which are integral and aligned to the improvement strategies across the SEND area. [Our Kirklees Futures | Kirklees Council](#)

These programmes are broader than the specific requirements of the WSOA and therefore the specific relevant sections in relation to the WSOA are highlighted in the table below.

The Kirklees Written Statement of Action priorities with linkages to the agreed SEND Transformation Plan with the Department for Education.

Priority 1 – The poor delivery of the HCP which does not support the identification of SEND in children at the earliest opportunity consistently.	
Objective	Transformation Workstream and Key Safety Valve Slide Deck Page(s) (Appendix 2)
<i>Objective 1.1 – Establish and embed new recruiting opportunities to fulfil staff capacity challenges.</i>	Safety Valve Slide Deck Page(s) Healthy Child Programme Pg 108
<i>Objective 1.2 - To ensure that all mandatory HCP checks are in line with national targets and regional bench marking averages</i>	Safety Valve Slide Deck Page(s) Healthy Child Programme Pg 110

Kirklees SEND Written Statement of Action

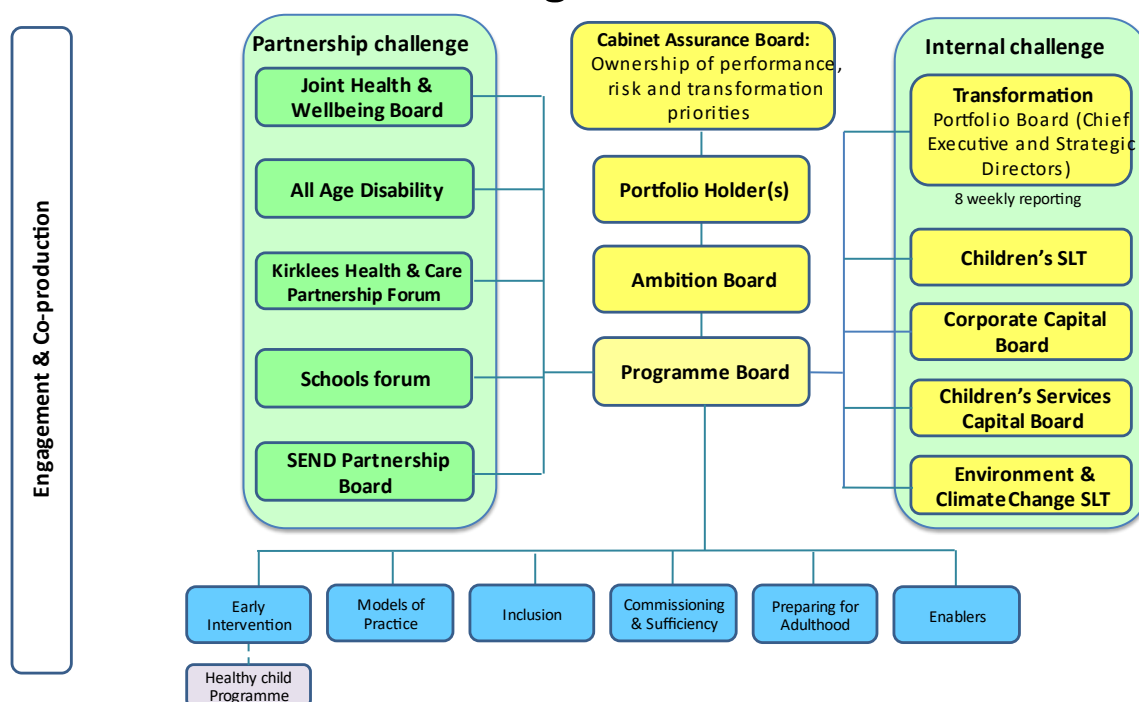
	Commission and Sufficiency Pg 80
<i>Objective 1.3 – Scoping and assessing options for improving the universal hearing impairment screening for all Reception children</i>	Safety Valve Slide Deck Page(s) Commissioning and Sufficiency Pg 78

Priority 2 - Address weaknesses in the area's ability across services and within settings to identify and meet the needs of children and young people with SEND who are in mainstream settings.	
<i>Objective 2.1 Improve parent/carer confidence/young people confidence in Kirklees SEND system</i>	Safety Valve Slide Deck Page(s) Models of Practice Pg 25 Models of Practice Pg 69 Enablers Pg 100
<i>Objective 2.2 Increase the range and impact of early intervention strategies</i>	Safety Valve Slide Deck Page(s) Models of Practice Pg 11 Early Interventions Pg 66
<i>Objective 2.3 Increase the sufficiency of places and settings across Kirklees Council</i>	Safety Valve Slide Deck Page(s) Models of Practice Pg 29 Inclusion Pg 49 & 53 Commission and Sufficiency Pg 78
<i>Objective 2.4 Increasing and improve the timeliness of responses to needs of children and young people with SEND</i>	Safety Valve Slide Deck Page(s) Models of Practice Pg 14 & 25 & 29 Early Intervention Pg 58 & 59 Commission and Sufficiency Pg 78,81
<i>Objective 2.5 Enhance and improve the preparation for adulthood (PfA)</i>	Safety Valve Slide Deck Page(s) Model of Practice Pg 15 Early Intervention Pg 58 & 61 Inclusion KSVSD Pg 49 Preparing for Adulthood Pg 85 - 98
<i>Objective 2.6 Improve outcomes for children and young people with SEND in mainstream settings</i>	Safety Valve Slide Deck Page(s) Model of Practice Pg 29 & Pg 36 Early Intervention Pg 59 & 61 Inclusion Pg 53 Preparing for Adulthood Pg 95

Objective 2.7 <i>Addressing workforce pressures and capacity issues</i>	Safety Valve Slide Deck Page(s) Models of Practice Pg 14 & 29 Inclusion Pg 41 Enablers Pg 103
---	---

The governance arrangements to deliver the Written Statement of Action will be incorporated into our existing structures which have been shared with the Department for Education.

SEND Programme Governance



Supporting information and strategies

Our WSOA actions draw from activities already being undertaken showing how the Kirklees partnership is responding to the issues highlighted within the SEND inspection. The key strategic documents (links attached) outline our holistic approach to improvement and are as follows:

Our Improvement Priorities

- Kirklees SEND Transformation Plan (Appendix 1)

Key Supporting Strategies which link to our Transformation Plan:

- Kirklees “Safety Valve” project plans submission (Appendix 2)
- Review of Thriving Kirklees 0-19 service/Health Child Programme (Appendix 2 Kirklees Safety Valve Slide Deck Pages 108 – 113)
- Our Kirklees Futures [Our Kirklees Futures | Kirklees Council](#)

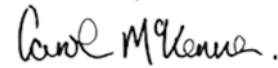
Kirklees SEND Written Statement of Action

- Our Voice consultation on Alternative Provision (Appendix 3)



Mel Meggs

Director of Children's Services



Carol McKenna

Accountable Officer - NHS West Yorkshire
Integrated Care Board - Kirklees

